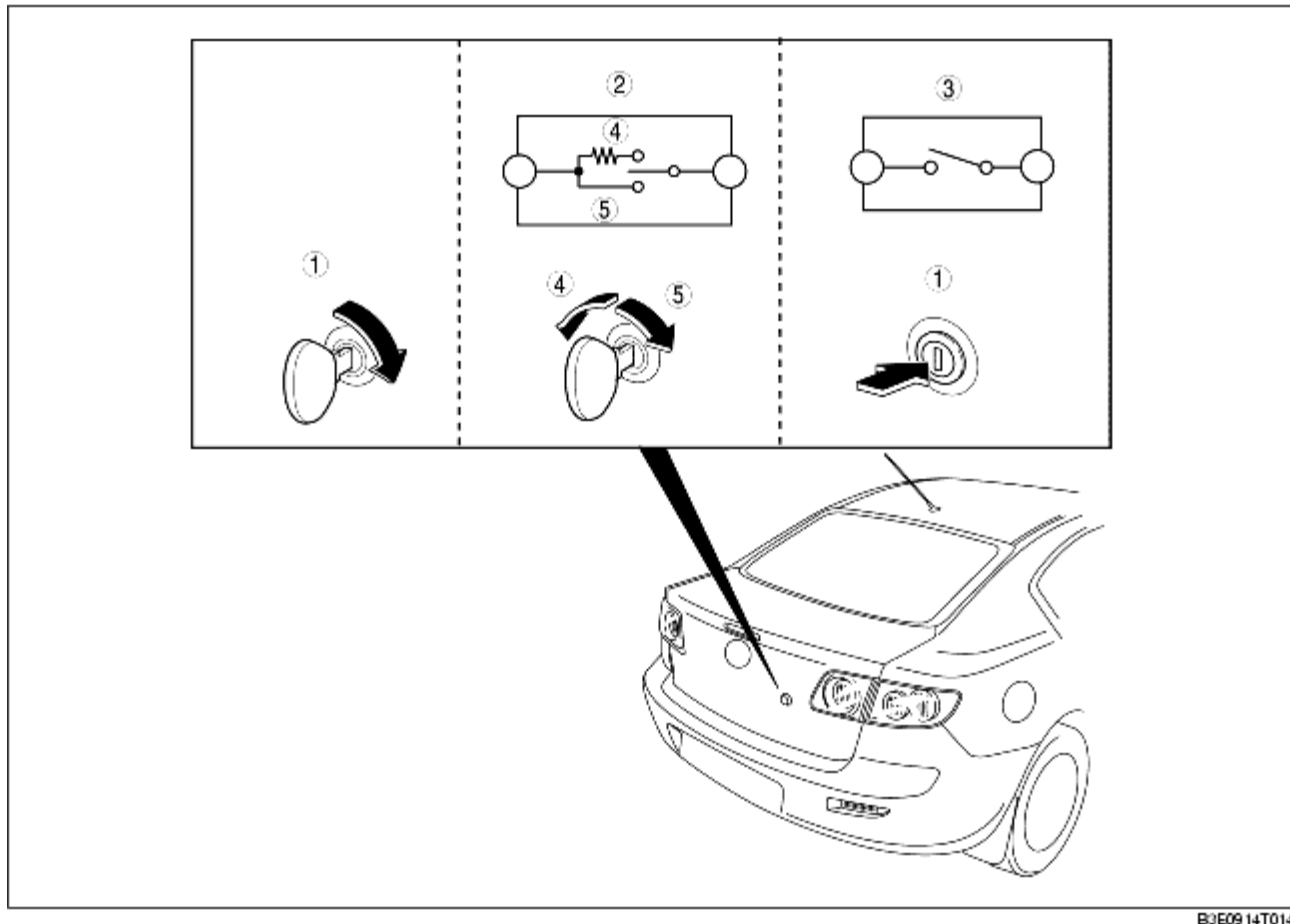


# TRUNK LID OPENER CONSTRUCTION/OPERATION

B3E091467002T01

- When the trunk lid key cylinder is turned to open, the trunk lid is opened via the rod.
- When the trunk lid key cylinder is locked/unlocked, a lock/unlock signal is input to the PJB.
- When the trunk lid is unlocked and the trunk key lid cylinder is pushed, the trunk lid opener operates and the trunk lid opens.

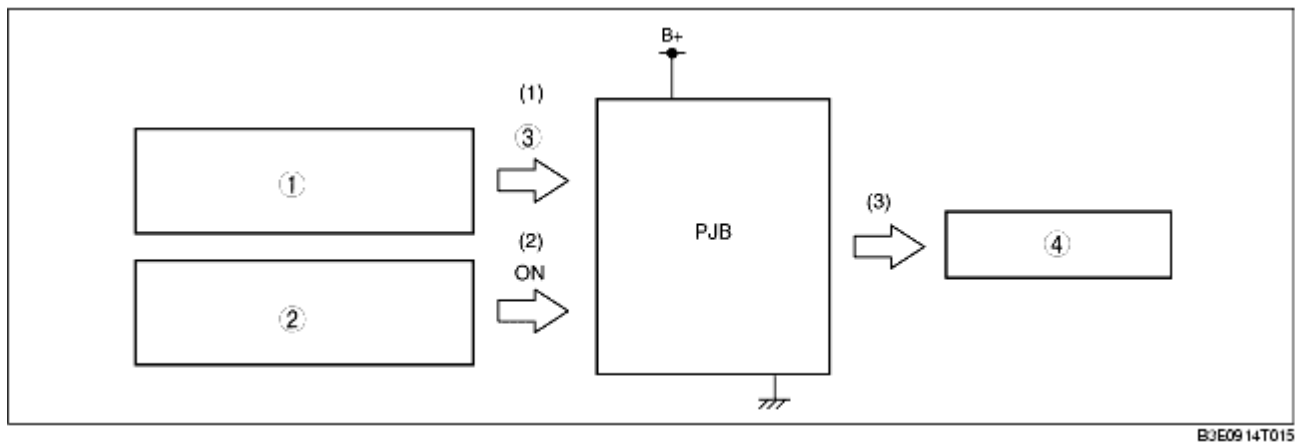


B3E0914T014

1	Trunk lid opens.
2	Trunk lid key cylinder switch
3	Trunk lid key cylinder push switch
4	Lock
5	Unlock

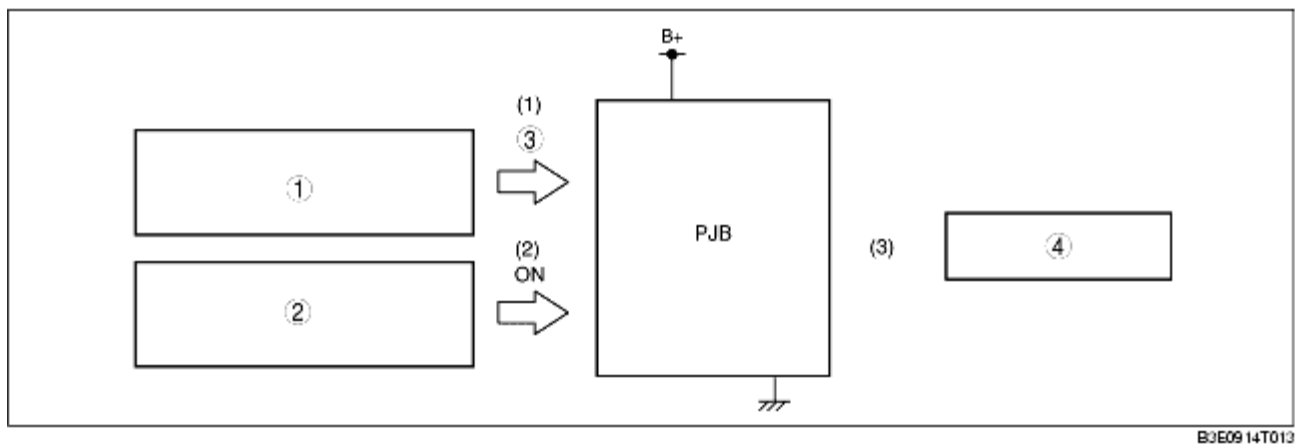
## Trunk Lid Key Cylinder Push Switch Operation

- When the trunk lid key cylinder is operated to unlock, an unlock signal is input to the PJB (1). Under this condition, when the trunk lid key cylinder is pushed, the cylinder push switch turns on and a signal is input to the PJB (2). When this signal is received, the PJB operates the trunk lid opener (3).



1	Trunk lid key cylinder switch
2	Trunk lid key cylinder push switch
3	Unlock
4	Trunk lid opener

- When the trunk lid key cylinder is operated to lock, a lock signal is input to the PJB (1). Under this condition, when the trunk lid key cylinder is pushed, the cylinder push switch turns on and a signal is input to the PJB (2). However, when this signal is received, the PJB does not operate the trunk lid opener (3).



1	Trunk lid key cylinder switch
2	Trunk lid key cylinder push switch
3	Lock
4	Trunk lid opener